

*Variable Fonts Are Here To Stay* by Dave Crossland and Laurence Penney. Includes links to additional resources at the bottom of the article.

### VARIABLE FONTS

Typically, typefaces require different font files for each of the weights and styles within a family. As a recent extension of the OpenType file format, variable fonts are designed to provide great variety in weight and style for a typeface *within a single font file*. Since a wide range of weights, styles, and shapes can be programmed within individual variable font files, they can produce a much greater degree of visual variety than traditional font files. For the web, all of this means better page-load times, highly specific typesetting, and lots of creative potential.

#### HOW DO THEY WORK?

Variable fonts are built with axes in mind — sliding scales of default, minimum and maximum values for settings such as character set width, style, and weight.

**AXIS TYPES** 5 categories of axes are registered in the spec: weight (**wght**), width (**wdth**), italic (**ital**), slant (**slnt**), and optical size (**opsz**). Not all of them have to be used for a font to work; additional custom axis types are also possible (for serif shape adjustments, for example).

#### HOW TO INCORPORATE VARIABLE FONTS: SYNTAX (STATIC EXAMPLES)

1) **Link to the fonts** (code varies based on source of license and font files):

If using Google variable fonts, follow the prompts to insert their <head> tag code in the HTML file. Ex.:

```
<head>
  <link rel="preconnect" href="https://
  fonts.gstatic.com">
  <link href="https://fonts.googleapis.
  com/css2?family=Bitter:wght@100;200;300
  ;400;500;570;600;700;800;900&display=sw
  ap" rel="stylesheet">
</head>
```

If you have font file(s), insert them into your project fonts folder and source them using @font-face in css. Ex.:

```
@font-face {
  font-family: MalvaVariable-Roman;
  src: url("fonts/MalvaVariable-Roman.
  ttf")
  format('truetype');
  font-weight: 100 900; }
```

2) Then, in either case above, set the type with css settings, for example:

```
a:link { font-family: 'Bitter', serif;
  font-size: 1.25em;
  font-weight: 200;
  color: white; }
a:hover { font-weight: 800;
  color: #c46f28; }
```

```
h3 { font-family: MalvaVariable-Roman;
  font-size: 3vw;
  font-weight: 200;
  color: gold; }
h3:hover { font-weight: 800; }
```

### CSS WEIGHTS & STYLES

Variable fonts' axes are based on number scales, such as:

- 100 = thin
- 200 = extra-light
- 300 = light
- 400 = normal, book
- 500 = medium
- 600 = demi-bold
- 700 = bold
- 800 = heavy
- 900 = black



*u-fonts.com*, an online inventory of variable fonts compiled by Nick Sherman.

## HOW TO USE VARIABLE FONTS: SYNTAX (ANIMATED EXAMPLES)

1) **Link to the fonts** (repeat choice of options on page 1, step 1). Example below points to a font file in the project fonts folder with @font-face in css:

```
@font-face {
  font-family: Studio Feixen Sans Variable;
  src: url("fonts/Studio Feixen Sans Variable.ttf") format('truetype');
  font-weight: 100 400; }
```

2) **Set the type and animations with css settings:**

**Animate on hover example:**

```
.variable_feixenSans {
  font-family: "Studio Feixen Sans Variable";
  font-size: 2.5vw; }

.variable_feixenSans h3 {
  -webkit-transition: all .5s ease;
  -moz-transition: all .5s ease;
  -o-transition: all .5s ease;
  transition: all .5s ease;

  font-variation-settings: "wght" 100, "wdth" 0;
  color: gold;
  line-height: 1em; }

.variable_feixenSans h3:hover {
  font-variation-settings: "wght" 400, "wdth" 100;
  color: aqua; }
```

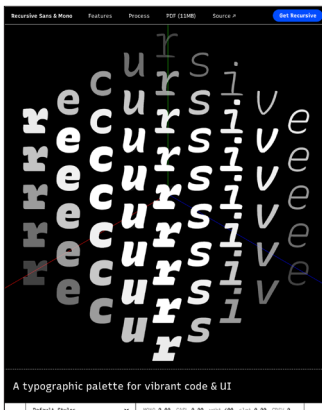
**Automatically animate example (using a keyframe animation):**

```
.variable_feixenSans_anim {
  font-family: "Studio Feixen Sans Variable";
  font-size: 2.5vw; }

.variable_feixenSans_anim h3 {
  color: gold;
  line-height: 1em;

  animation-duration: 5s;
  animation-name: moveType;
  animation-iteration-count: infinite; }

@keyframes moveType {
  0% { font-variation-settings: "wght" 100, "wdth" 0; }
  30% { font-variation-settings: "wght" 250, "wdth" 50; }
  60% { font-variation-settings: "wght" 400, "wdth" 100; }
  100% { font-variation-settings: "wght" 100, "wdth" 0; }
}
```



*Recursive variable font by Arrow Type (with 5 axes). Arrow Type stems from the KABK (Royal Academy of Art) Type Design program in The Hague.*