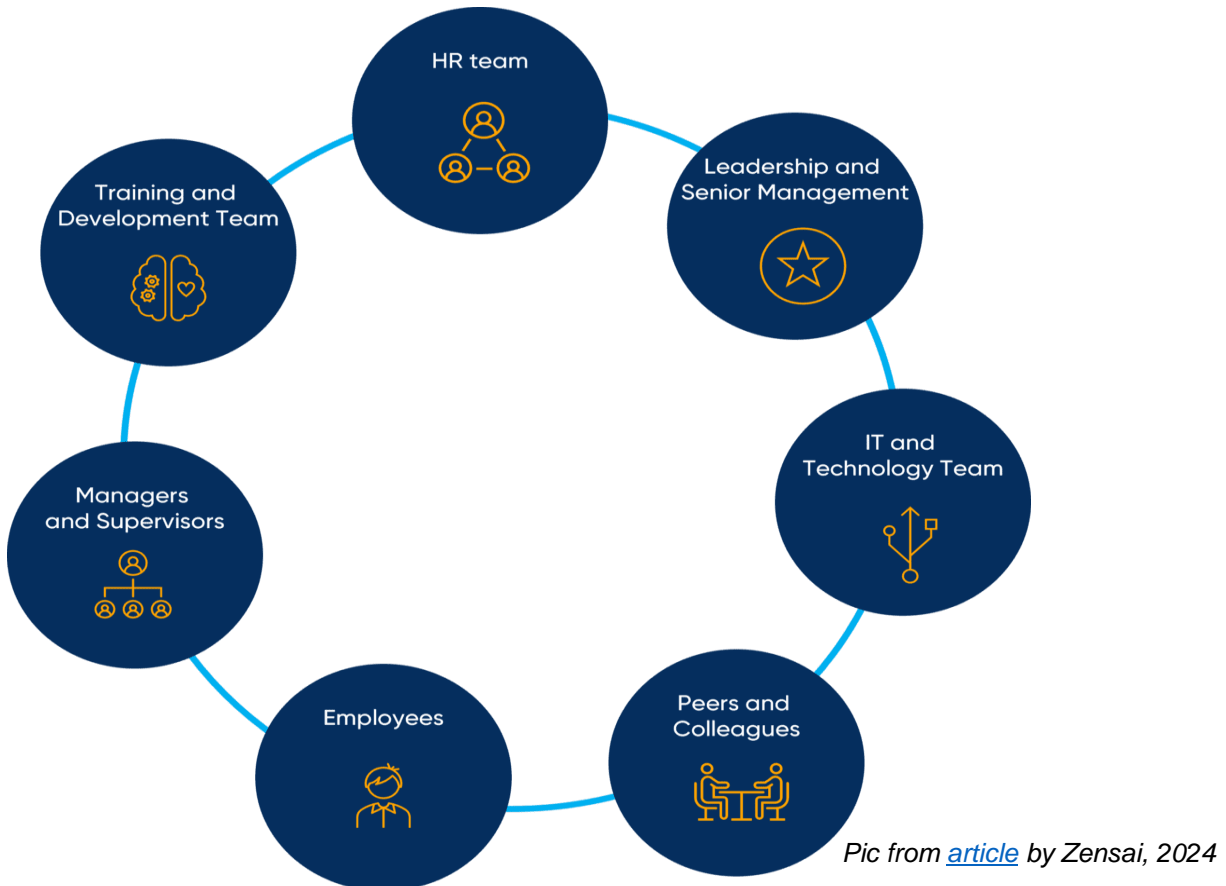


As a supervisor, you play a pivotal role in the employment journey of your direct reports' (and their direct reports'). Although there are many players who are responsible for an employee's engagement, the supervisor is the one who takes greater responsibility to "consistently engage their teams to achieve outstanding performance" ([Jim Harter, 2015](#)). Gallup found that 70% of the variance in a team's engagement was related to their supervisor's role.



That is the importance of you and *TalentED*, as *TalentED* provides a central location where you can better engage and collaborate with your employee(s) to make a positive impact on the direction of the team's performance and growth.

The platform is also for self-management of your own personal and professional development as well, so that you can be the best supervisor/leader that you can be for yourself, your team, the university, and the community at-large.

By clicking the **Org Chart** icon on the **Control Panel** within *TalentED*, you will see that you have:

- A view of the reporting structure
- **24/7 access** to an employee's training, performance assessment/evaluation records and development plan.
- A repository to house **feedback / employee discussions**.
- **Training assignment capability** for a single employee or the team.

Refer to the [Table of Resources/Guides](#) document **or** [HELP](#) for additional guidance/steps.