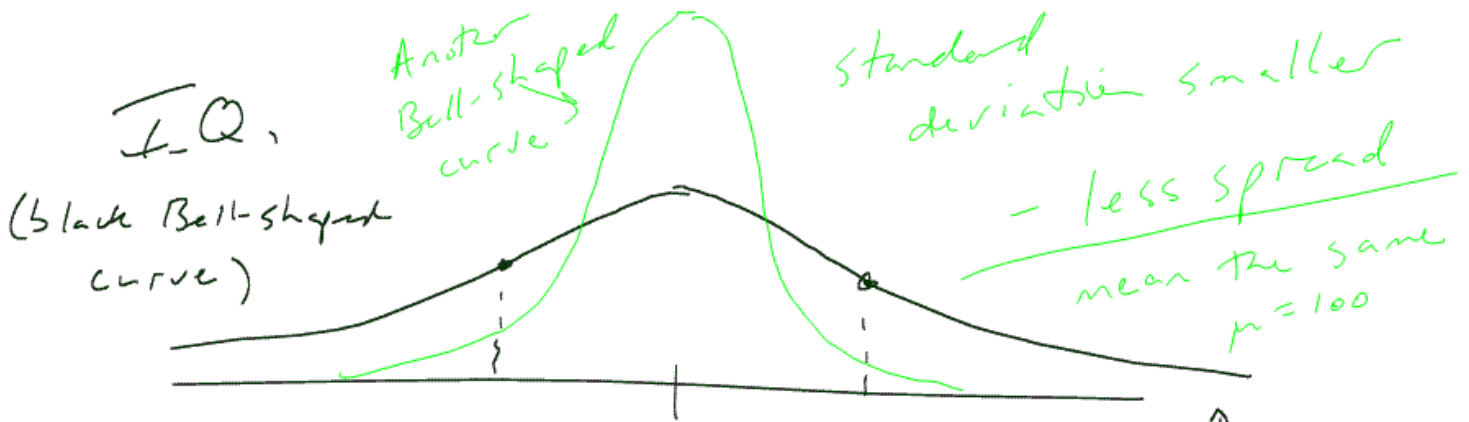


# Deviations - differences from the mean

Note Title

1/23/2006



A sample of 100 individuals would yield an estimate of the parameters:

$$\bar{x} \approx \mu$$
$$s \approx \sigma$$

90     $\mu = 100$     110

$\mu$  - the population mean  
"mu"

(the parameter)

↑  
standard deviation of 10  
I.Q. units  
 $\sigma = 10$   
(parameter sigma)