

CHE 310 – 002 & 003
Lecture Homework #16

Section 002 Due: Wednesday, Feb 27, 2019, 9:00 am.

Section 003 Due: Wednesday, Feb 27, 2019, 10:00 am.

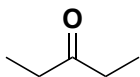
1. If you had “resubmit” written on your exam, rewrite the question(s) where I have commented on separate paper, including the correct answer how one gets the correct answer (show your work). For example, if two compounds are non-isomeric, then I would expect one to say that they have different formulas and show me those formulas. Turn in both the exam and responses to my comments.
2. For the compounds below label the protons on each carbon using a,b,c... to distinguish between those which are equivalent and those which are non-equivalent.

For example:

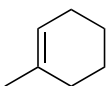


a) methylcyclopentane

b)



c)



3. Describe what the information given in the parts of an NMR spectrum below tells about a molecule's structure.
 - a. Chemical Shift
 - b. Integration
 - c. spin-spin splitting