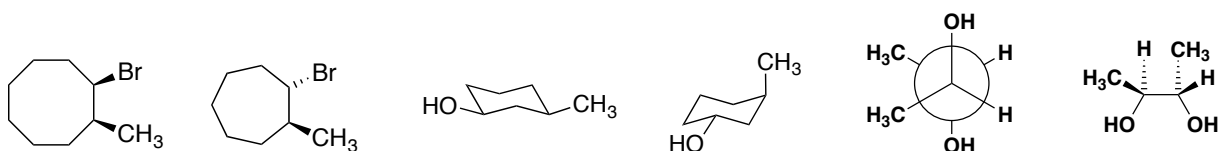


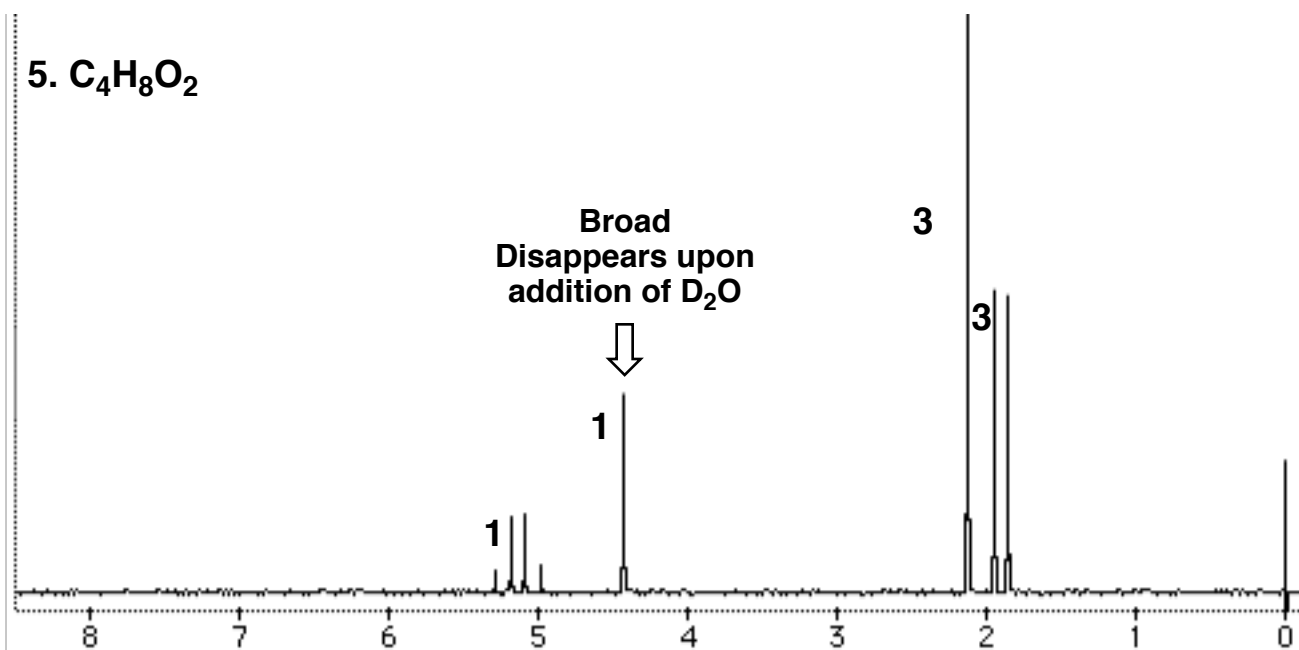
CHE 310 – 002 & 003  
Lecture Homework #21

**Due:** Monday, March 18, 2019, 10:00 am.

1. Provide structures for the four  $^1\text{H}$  NMR spectra on the following pages.
2. For each pair of molecules below **fill in the blank** with their relationship. Choices are *identical*, *conformational isomers*, *resonance contributors*, *constitutional isomers*, *enantiomers*, *diastereomers*, and *non-isomeric*



5.  $C_4H_8O_2$



6.  $C_4H_8O_2$

